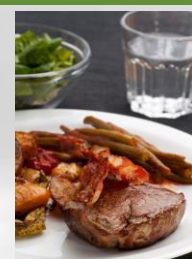


# MWPF Timetable – Australia

## Meat, Tallow, Pathogens, Food & Water

January to December 2018



Despatch N° & Date	Results Due	Meat <sup>1</sup>	Tallow <sup>1</sup>	Pathogens	Food	Water (Micro) <sup>4</sup>
2. Tues 30 Jan	Wed 14 Feb	Chemistry-MBM Microbiology <sup>2</sup>	Tallow	<i>Salmonella</i> / <i>Listeria</i> <i>Listeria</i> Enumeration	Microbiology	Microbiology <i>Potable</i> <sup>5</sup> , <i>Pool</i>
3. Mon 05 Mar	Tues 20 Mar	Chemistry-Meat Paste Microbiology			Shellfish	Microbiology <i>Receiving</i>
4. Tues 03 Apr	Wed 18 Apr	Chemistry-MBM Microbiology	Tallow	<i>Vibrio parahaemolyticus</i> <i>Cronobacter</i> spp.	Microbiology	Microbiology <i>Potable</i> <sup>5</sup> (incl. <i>P. aeru</i> ), <i>Pool</i> , <i>Seawater</i>
5. Mon 14 May	Tues 29 May	Chemistry-Meat Paste Microbiology		<i>Campylobacter</i> P/A		Microbiology <i>Effluent</i> <sup>6</sup>
6. Mon 04 Jun	Wed 20 Jun	Chemistry-MBM Microbiology	Tallow	<i>Salmonella</i> / <i>Listeria</i> <i>Campylobacter</i> -enumeration STEC incl. <i>E. coli</i> O157:H7 <sup>3</sup>	Microbiology	Microbiology <i>Potable</i> <sup>5</sup> , <i>Pool</i>
7. Mon 02 Jul	Tues 17 Jul	Chemistry-Meat Paste Microbiology				Microbiology <i>Receiving</i>
8. Mon 30 Jul	Tues 14 Aug	Chemistry-MBM Microbiology <sup>2</sup>	Tallow	<i>Salmonella</i> / <i>Listeria</i> / <i>Shigella</i> <i>Vibrio parahaemolyticus</i>	Microbiology	Microbiology <i>Potable</i> <sup>5</sup> (incl. <i>P. aeru</i> ), <i>Pool</i> , <i>Effluent</i> <sup>6</sup>
9. Mon 03 Sep	Tues 18 Sep	Chemistry-Meat Paste Microbiology		<i>Listeria</i> Enumeration <i>Campylobacter</i> P/A	Shellfish	Microbiology <i>Receiving</i>
10. Mon 01 Oct	Tues 16 Oct	Chemistry-MBM Microbiology	Tallow	<i>Cronobacter</i> spp. <i>Campylobacter</i> -enumeration STEC incl. <i>E. coli</i> O157:H7 <sup>3</sup>	Microbiology	Microbiology <i>Potable</i> <sup>5</sup> , <i>Seawater</i> , <i>Pool</i> <i>Effluent</i> <sup>6</sup>
11. Mon 05 Nov <i>Interstate</i> 11. Tue 30 Oct <i>Victoria</i>	Tues 20 Nov	Chemistry-Meat Paste Microbiology	Tallow			
12. Mon 26 Nov	Tues 11 Dec	Chemistry-MBM Microbiology		<i>Salmonella</i> / <i>Listeria</i> / <i>Shigella</i>	Microbiology	Microbiology <i>Potable</i> <sup>5</sup>

- Notes:**
- Meat Chemistry and Tallow:** Due to changes in BICON Import Conditions, we are very pleased to now be able to provide Meat & Bonemeal, Meat Paste and Tallow Chemistry samples to our Australian participants (supplied from New Zealand).
  - Meat Microbiology:** *Staphylococcus aureus* testing is offered in the months of **2** and **8**.
  - STEC = Shiga toxin-producing *Escherichia coli* (including O157:H7);** if you would like to participate in this program, please contact us as you may require a Permit to Import these samples.
  - Our **WaterChek Chemistry programme** has a separate Timetable – please ask if you would like a copy.
  - Potable Water:** All rounds include the *Clostridium perfringens* test; selected rounds include the additional tests listed above.
  - Effluent Water:** All rounds include the tests *Clostridium perfringens* and *Pseudomonas aeruginosa*.

### CONTACT DETAILS

For programme enrolments, enquiries or sample requests please contact:

Sarah Giannoulidis | Global Proficiency Pty Ltd | PO Box 1335 | Tullamarine | Victoria 3043

p 03 9089 1151 | e [sarah.giannoulidis@global-proficiency.com](mailto:sarah.giannoulidis@global-proficiency.com)