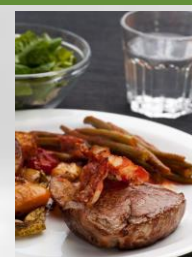


# MWPF Timetable – Australia

## Meat, Tallow, Pathogens, Food & Water

January to December 2017



Despatch N° & Date	Results Due	Meat <sup>1</sup>	Tallow <sup>1</sup>	Pathogens	Food	Water (Micro) <sup>4</sup>
2. Mon 30 Jan	14 Feb	Microbiology	Tallow	<i>Salmonella</i> / <i>Listeria</i> <i>Listeria</i> Enumeration	Microbiology	Microbiology <i>Potable</i> <sup>5</sup> , <i>Pool</i>
3. Mon 06 Mar	21 Mar	Chemistry-Meat Paste Microbiology <sup>2</sup>			Shellfish	Microbiology <i>Receiving</i>
4. Mon 03 Apr	19 Apr	Chemistry (Meat & Bonemeal) Microbiology	Tallow	<i>Vibrio parahaemolyticus</i> <i>Cronobacter</i> spp.	Microbiology	Microbiology <i>Potable</i> <sup>5</sup> (incl. <i>P. aeru</i> ), <i>Pool</i> , <i>Seawater</i>
5. Mon 15 May	30 May	Microbiology		<i>Campylobacter</i> P/A		Microbiology <i>Effluent</i> <sup>6</sup>
6. Mon 05 Jun	21 Jun	Microbiology	Tallow	<i>Salmonella</i> / <i>Listeria</i> <i>Campylobacter</i> -enumeration STEC incl. <i>E. coli</i> O157:H7 <sup>3</sup>	Microbiology	Microbiology <i>Potable</i> <sup>5</sup> , <i>Pool</i>
7. Mon 03 Jul	18 Jul	Chemistry-Meat Paste Microbiology				Microbiology <i>Receiving</i>
8. Mon 31 Jul	15 Aug	Microbiology <sup>2</sup>	Tallow	<i>Salmonella</i> / <i>Listeria</i> / <i>Shigella</i> <i>Vibrio parahaemolyticus</i>	Microbiology	Microbiology <i>Potable</i> <sup>5</sup> (incl. <i>P. aeru</i> ), <i>Pool</i> , <i>Effluent</i> <sup>6</sup>
9. Mon 04 Sep	19 Sep	Chemistry-Meat Paste Microbiology		<i>Listeria</i> Enumeration <i>Campylobacter</i> P/A	Shellfish	Microbiology <i>Receiving</i>
10. Mon 02 Oct	17 Oct	Chemistry (Meat & Bonemeal) Microbiology	Tallow	<i>Cronobacter</i> spp. <i>Campylobacter</i> -enumeration STEC incl. <i>E. coli</i> O157:H7 <sup>3</sup>	Microbiology	Microbiology <i>Potable</i> <sup>5</sup> , <i>Seawater</i> , <i>Pool</i> <i>Effluent</i> <sup>6</sup>
11. Mon 06 Nov <i>Interstate</i>	21 Nov	Microbiology				
11. Wed 08 Nov <i>VIC only</i>						
12. Mon 27 Nov	12 Dec	Microbiology		<i>Salmonella</i> / <i>Listeria</i> / <i>Shigella</i>	Microbiology	Microbiology <i>Potable</i> <sup>5</sup>

- Notes:**
- Meat Chemistry and Tallow:** Due to changes in BICON Import Conditions, we are very pleased to now be able to provide Meat Paste and Tallow Chemistry samples to our Australian participants (supplied from New Zealand).
  - Meat Microbiology:** *Staphylococcus aureus* testing is offered in the months of **2** and **8**.
  - STEC = Shiga toxin-producing *Escherichia coli* (including O157:H7);** if you would like to participate in this program, please contact us as you may require a Permit to Import these samples.
  - Our **WaterChek Chemistry programme** has a separate Timetable – please ask if you would like a copy.
  - Potable Water:** All rounds include the *Clostridium perfringens* test; selected rounds include the additional tests listed above.
  - Effluent Water:** All rounds include the tests *Clostridium perfringens* and *Pseudomonas aeruginosa*.

### CONTACT DETAILS

For programme enrolments, enquiries or sample requests please contact:

Sarah Giannoulidis | Global Proficiency Pty Ltd | PO Box 1335 | Tullamarine | Victoria 3043

p 03 8318 9014 | e [sarah.giannoulidis@global-proficiency.com](mailto:sarah.giannoulidis@global-proficiency.com)