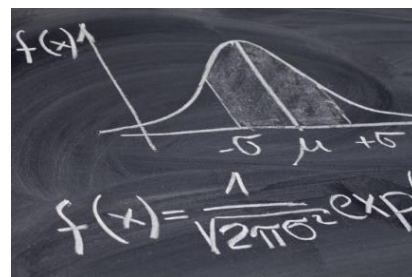


Global Proficiency offers a range of specialist services to assist with interpretation of test data and related information, including Single-point Measurement Audits, customised ring trials, assessment of bias and accuracy, repeatability and reproducibility, measurement uncertainty, method validation, and design of sampling plans.



DATA CHEK OBJECTIVE

To assist and support our customers by implementing processes that validate, optimise and verify that procedures, routines and methods used within an organisation are performing to expectations and specifications. From sampling, production, methodology, precision and accuracy to the interpretation of the data gathered from these processes, we have the experience and expertise to help.

DATA CHEK CUSTOMISED RING TRIALS

Ring trials are used by organisations for many different reasons. Global Proficiency has been involved in planning and designing specific, customised ring trials to assist industry groups and organisations to:

- Assess laboratory performance of potential testing partners.
- Verify that results obtained are aligned across a specific industry or method.
- Ensure that dangerous or toxic compounds can be detected and reported consistently across multiple laboratories. For example, dis-infection residues in dairy products.
- Verify that laboratory results align internationally for the export of products such as honey and infant formula.

WHY GLOBAL PROFICIENCY?

Global Proficiency operates in accordance with international best practice. We are:

- Accredited to ISO/IEC 17043:2010 Conformity Assessment - General Requirements for Proficiency Testing.

- Accredited to ISO 17034: General requirements for the competence of Reference Material Producers.
- Used by Ministry for Primary Industries New Zealand, as the proficiency provider for the meat and food testing industries.

STATISTICAL ASSESSMENT OPTIONS

Part of planning a customised ring trial is applying fit-for-purpose parameters. One of these parameters is the limit within which the data should fall. There are several options to consider:

- The standard deviation of the data. This means a predetermined percentage of data will fall within a range (e.g., 2 standard deviations will contain ~95% of the submitted data).
- A fixed limit based on industry, method, trade, or regulatory requirements. This limit would ideally be set to challenge performance in line with expectations.
- An agreed or historical limit may be used if the method is new or if there is prior testing on which to base expectations. There may also be an in-house expectation that all laboratories should conform to.

DATA CHEK RING TRIAL EXAMPLES

We have proven experience providing customised ring trials for many customers across several industries. Please contact us if you would like to know more.

FOR MORE INFORMATION PLEASE VISIT OUR WEBSITE

www.global-proficiency.com

OR EMAIL

enquiries@global-proficiency.com